

RAF Casualties

30 August 1940 - 16.50 - 17.45 hrs Combat D. Kent.

RAF Casualties Combat D 16.50 – 17.45 hrs

43 Sqn Hurricane V6548 S/Ldr J V C Badger – seriously injured. Shot down by Me109s. Baled out but suffered internal injuries as a result of landing on a broken bough of a tree at Townland Farm Woodchurch. He was initially admitted to Ashford Hospital and was transferred to RAF Halton Hospital on 10 January 1941 with a ruptured Perineum and fractured pelvis. (died 30.6.41). Aircraft crashed south of Woodchurch, Kent.

253 Sqn Hurricane P3213 Sgt J H Dickinson - killed. Pilot baled out but is reported to have been machine gunned while descending in his parachute. Aircraft crashed at Cuckold's Corner, Plurenden Manor, High Halden, Kent.


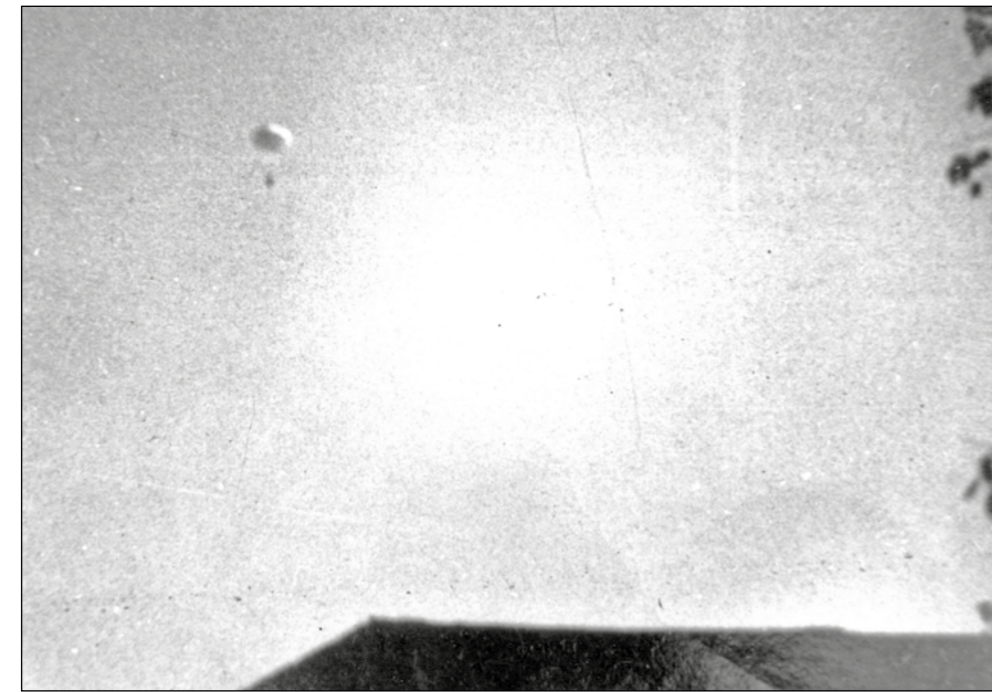
253 Sqn Hurricane P3412 F/Lt J H Wedgewood - safe. Damaged by Me109s over Dungeness.

253 Sqn Hurricane P2631 SW-X Sgt S F Cooper - safe. Shot down and baled out, landed with an injured ankle near Staplehurst and returned to Kenley. Aircraft crashed at Woolpack Corner, Biddenden, Kent.

John Holt Dickinson (21)
 Born: Southport, Lancashire.
 Joined the RAF in 1937.
 Joined 253 Squadron on 8th June 1940.
 Combat claims - none.

John Vincent Clarence Badger DFC (28)
 Born: Lambeth, London.
 Joined the RAF in 1928.
 Joined 33 Squadron in 1933.
 Flew with the Fleet Air Arm from 1934 to 1939.
 Joined the Air Staff of 13 Group in 1939.
 Re-joined 43 Squadron in June 1940.
 Became CO of 43 Squadron on 9th July 1940.
 Combat claims - 11:

12/7/40 He111 shared.	16/8/40 Ju87 destroyed.
8/8/40 Me109 probable.	16/8/40 Ju87 destroyed.
13/8/40 Ju88 damaged.	16/8/40 Ju87 destroyed.
13/8/40 Ju88 damaged.	26/8/40 He111 destroyed.
14/8/40 Ju88 destroyed.	26/8/40 He111 shared.
15/8/40 Ju88 destroyed.	

Left: A poignant photo showing Sqn Ldr John Badger descending by parachute over Townland Farm on 30 August 1940. Moments after this photo was taken, the wounded pilot fell into trees and received further injuries which proved to be fatal.

18.00 – 18.45 hrs... Kent

COMBAT E



LUFTWAFFE TARGET:
 Biggin Hill 18.05 hrs.

Shortly before 18.00 hours one of the many plots that been observed over the Channel turned inland and crossed the coast near Dover. The 20+ raid headed towards the Isle of Sheppey, then turned west to Biggin Hill. The bombers made a low-level attack at 18.10 hours, minutes after a Flight from 79 Squadron had taken off, but again only the fighters were engaged. Less than twenty bombs hit the airfield, but accurately. Many buildings were destroyed and services broken including telephones. Casualties are widely quoted as '39 killed and 26 wounded'. Although details of the casualties are vague, most fatalities occurred when a shelter received a direct hit. Luftwaffe Intelligence reported that 24 SC50 and 6 SC250 bombs were dropped on Biggin Hill, indicating that only three or four Ju88s made the attack.

79 Squadron – 6 Hurricanes up from Biggin Hill to patrol base.
 222 Squadron – 12 Spitfires up from Rochford to patrol Manston

RAF Victory Claims Combat E 18.00 – 18.45 hrs

79 Sqn	F/Lt G D L Haysom	Me109 probable	Tonbridge
79 Sqn	Sgt H A Bolton	Me109 probable	Tonbridge
222 Sqn	S/Ldr J H Hill	Me109 damaged	Canterbury
222 Sqn	F/Lt A I Robinson	Me109 probable	Canterbury

Luftwaffe Victory Claims Combat E 18.00 – 18.45 hrs

St I(J)/LG2	Hptm Bernhard Mielke	Spitfire	
St I(J)/LG2	Lt Friedrich-Wilhelm Strakeljahn	Spitfire	
2(J)/LG2	Uffz Walter Schumann	Spitfire	Maidstone
2(J)/LG2	Ofw Hermann Staeger	Spitfire	Maidstone
2(J)/LG2	Oblt Herbert Ihlefeld	Spitfire	Biggin Hill

Luftwaffe Casualty Combat E 18.00 – 18.45 hrs

Stab I/LG2 Me109E-4 Wn.2043 Fell into the sea off Calais. Ff: Hptm Bernhard Mielke missing.

Contemporary Accounts

30 August 1940 - 18.00 - 18.45 hrs Combat E. Kent.

79 SQUADRON OPERATIONS RECORD BOOK

Six aircraft took off and they saw aerodrome bombed while they were doing first circuit after the take-off. Apparently 15 to 20 Ju88s, 30 Me109s, 30 Me110s or Jaguars. F/Lt Haysom got one probable Me109. Sgt Bolton thinks he got a Me109 also. All landed 18.30. P/O Mayhew's aircraft u/s with tail plane rudder shot up (appeared 109 cannon shots).

R/T control failed after the bombing of aerodrome. One or two more patrols were carried out but nil to report.

222 SQUADRON INTELLIGENCE REPORT

17.35 – 18.53 hours

Near Canterbury, a number of Me109s were observed in line astern formation.

The squadron attacked, with the result that out of two enemy aircraft engaged by F/Lt Robinson, one was probably shot down and another was damaged by the squadron leader; both in the area between Canterbury and Folkestone.

COMBAT REPORT:

F/Lt A I Robinson – Blue 1, B Flight, 222 Squadron

At about 18 hours on 30.8.40 I was leading Blue Section of 222 Squadron, which was patrolling Canterbury at 20,000 feet. On sighting the enemy the squadron dived to the attack in line astern. At this moment two Me109s dived onto Green Section behind me and shot one of the section down before I could prevent it. I engaged both 109s and followed one down from 20,000 feet to 300 feet, firing as I went. This aircraft was now emitting white smoke but I had to end the engagement just north of Folkestone as I was being followed by another 109 which, however continued on a south-west course out to sea.

I was using a cine-gun on this attack.



COMBAT REPORT:

S/Ldr J H Hill – 222 Squadron

Enemy aircraft were sighted at 22,000 feet south-west of Canterbury. Various Me109s were escorting above bombers. I saw formation of three and astern attack on right hand one leading squadron down on to various others. I fired a long burst from 300 to 100 yards and as I opened fire the 109 turned to the right and appeared to be damaged as my shots were definitely hitting the e/a/c.



Left: Spitfire P9323 ZD-F of 222 Squadron was shot down in this combat, Arthur Spears managing to bale out successfully over Kent.

RAF Casualties

30 August 1940 - 18.00 - 18.45 hrs Combat E. Kent.

RAF Casualties Combat E 18.00 – 18.45 hrs

79 Sqn Hurricane P/O P F Mayhew - safe. Damaged in rudder by Me109s over Biggin Hill.

222 Sqn Spitfire K9826 ZD-X P/O H P M Edridge – injured. Shot down by Me109s. Pilot baled out with burns to face and landed at Broome Park, Denton. Aircraft crashed and burned out at Marley, Kent. He flew again on 21st September.

222 Sqn Spitfire R6628 Sgt J I Johnson - killed. Shot down by Me109s. Crashed at Langham Park Farm, Bishopsbourne, Kent.

222 Sqn Spitfire P9443 F/Lt G C Matheson - injured. Shot down by Me109s and crash-landed near Sittingbourne, Kent. Geoffrey Matheson flew again on September 21st.

222 Sqn Spitfire P9323 ZD-F Sgt A W P Spears - safe. Shot down by Me109s. Pilot baled out and aircraft crashed at South Lees Farm, Minster, Kent.

Joseph Inkerman Johnson (26)

Born: Hulcote, Northants.

Joined the RAF in 1935 as an Aircrafthand, became a pilot in 1939.

Joined 222 Squadron in November 1939.

Combat claims - none.



Casualty File:

Accident (F.B.) Involving Spitfire R.6628.

On the 30th August, 1940 at 17.10 hours the squadron, consisting of eight aircraft only, took off from Rochford to intercept enemy raids. When patrolling over Canterbury at 20,000 feet, about fifteen enemy aircraft were sighted and the squadron dived to the attack in line astern. At this moment further enemy aircraft (Me109s), which had been covering dived on the squadron and during the combat which ensued, 520406, Sergeant J I Johnson, pilot of aircraft R6628 was shot down and crashed near Park Farm, Bishopsbourne. Sergeant Johnson was killed and his body was conveyed to R.A.F. station, Hawkinge.

Below: A bandaged Geoffrey Matheson surveys the wreckage of his Spitfire P9443 after being shot down over Sittingbourne in Kent on 30 August 1940.

